

Figure 12. Water Management Features Surviving (detail of western area: IW024-IW028)

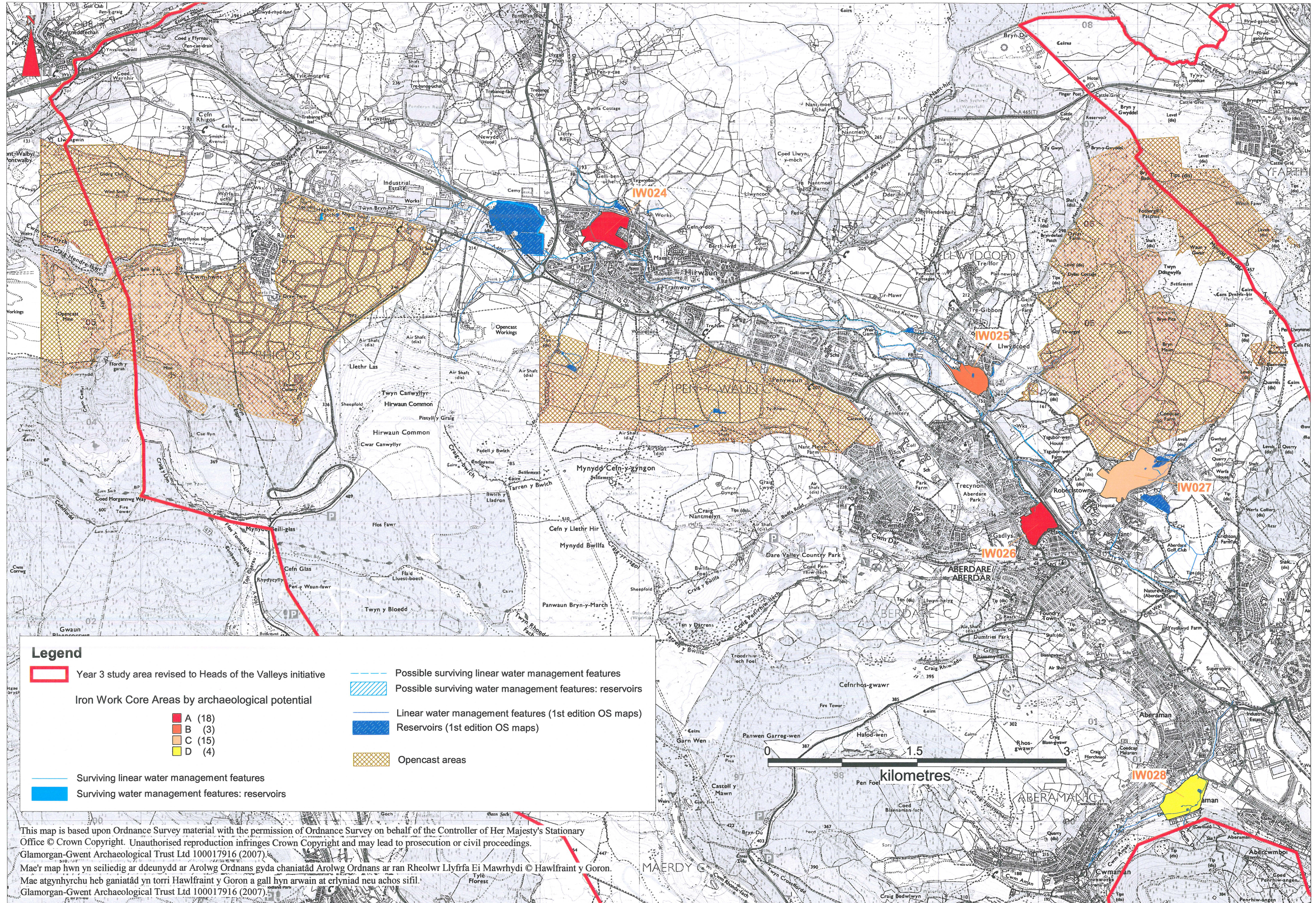
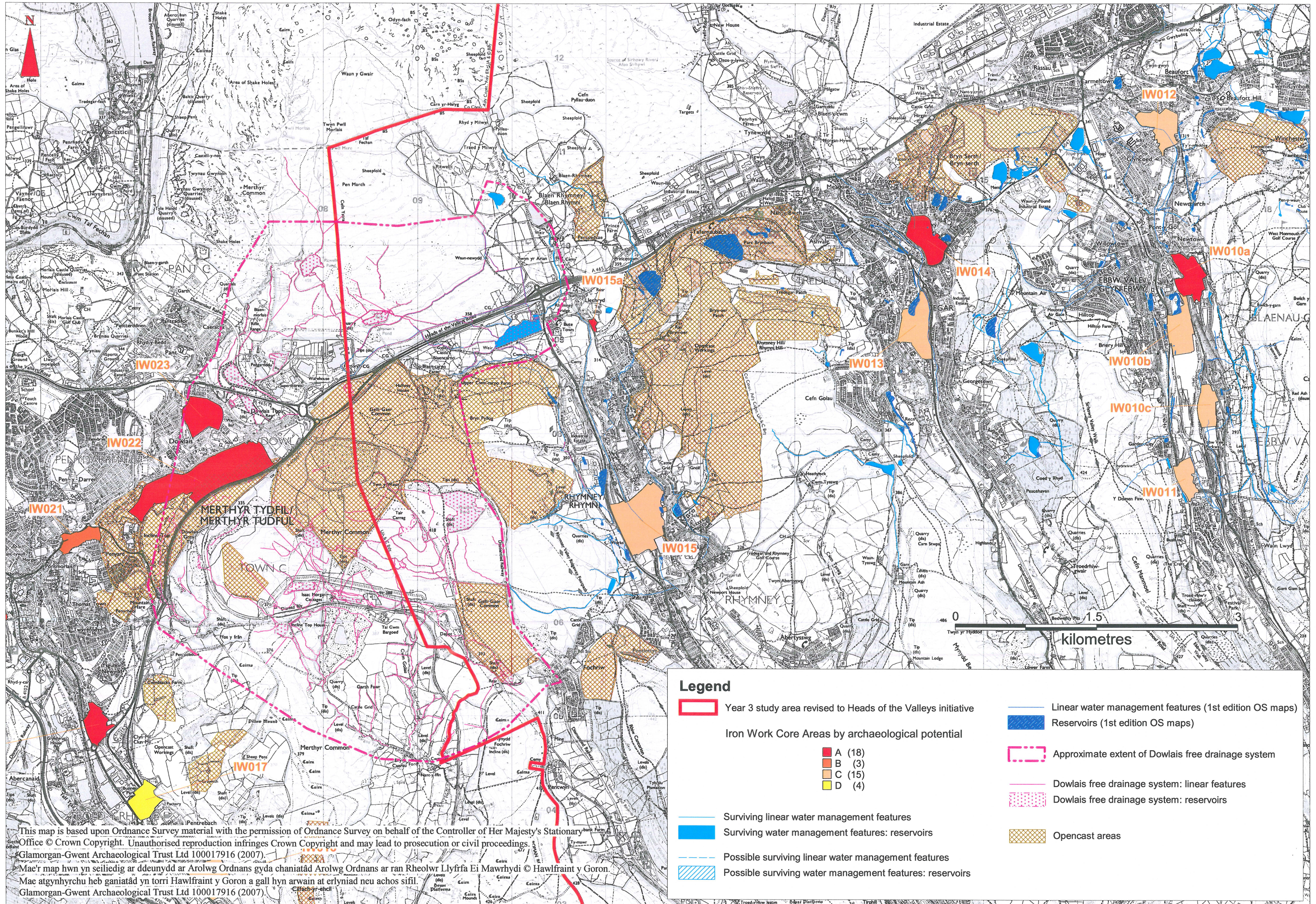
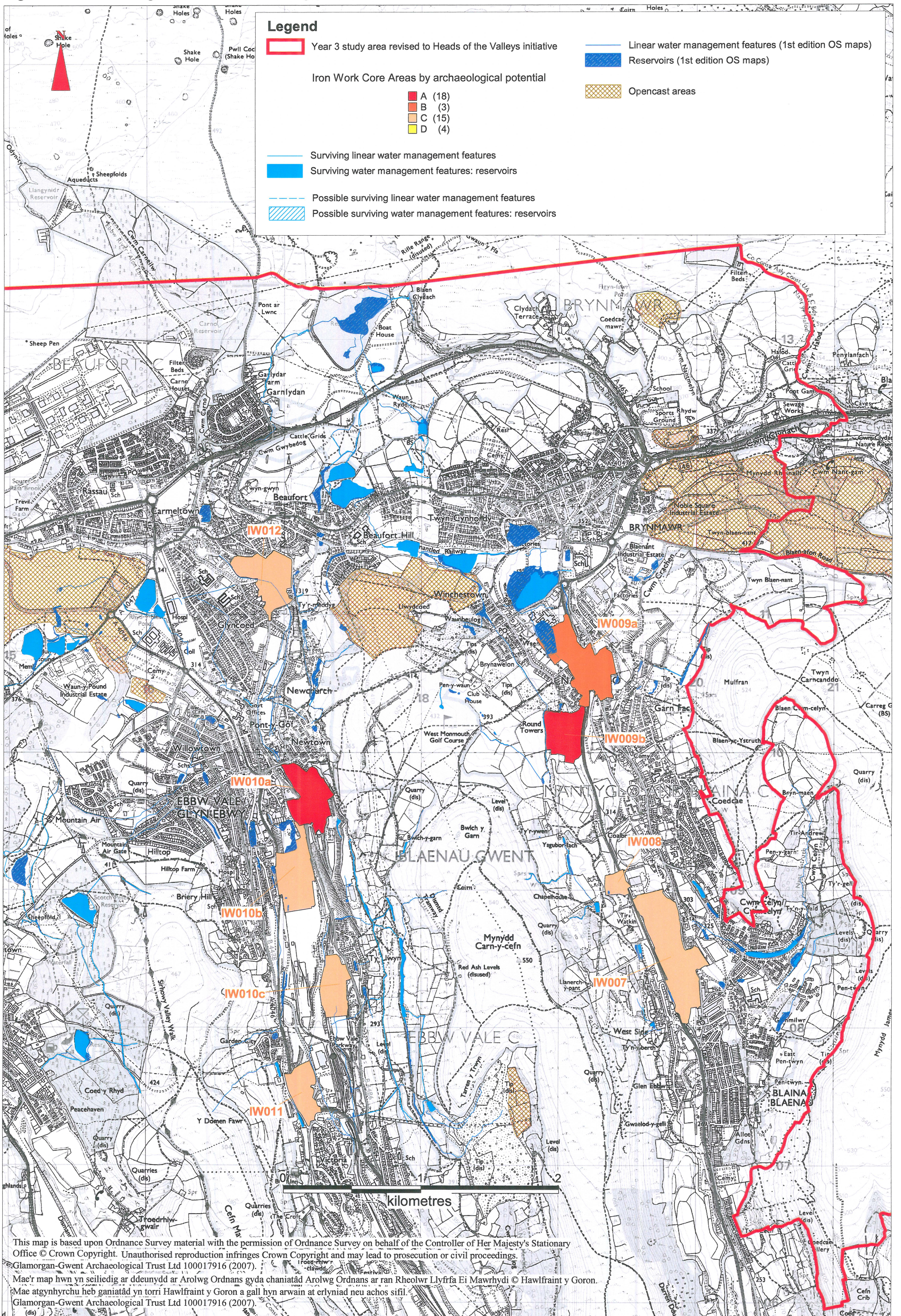


Figure 13. Water Management Features Surviving (detail of central area: IW010a-IW015a)



This map is based upon Ordnance Survey material with the permission of Ordnance Survey on behalf of the Controller of Her Majesty's Stationary Office © Crown Copyright. Unauthorised reproduction infringes Crown Copyright and may lead to prosecution or civil proceedings.
 Glamorgan-Gwent Archaeological Trust Ltd 100017916 (2007).
 Mae'r map hwn yn seiliedig ar ddeunydd ar Arolwg Ordnans gyda chaniatâd Arolwg Ordnans ar ran Rheolwr Llyfrfa Ei Mawrhydi © Hawlfraint y Goron.
 Mae atgynhyrchu heb ganiatâd yn torri Hawlfraint y Goron a gall hyn arwain at erlyniad neu achos sifil.
 Glamorgan-Gwent Archaeological Trust Ltd 100017916 (2007).

Figure 14. Water Management Features Surviving (detail of eastern area: IW007-IW012)



This map is based upon Ordnance Survey material with the permission of Ordnance Survey on behalf of the Controller of Her Majesty's Stationary Office © Crown Copyright. Unauthorised reproduction infringes Crown Copyright and may lead to prosecution or civil proceedings.

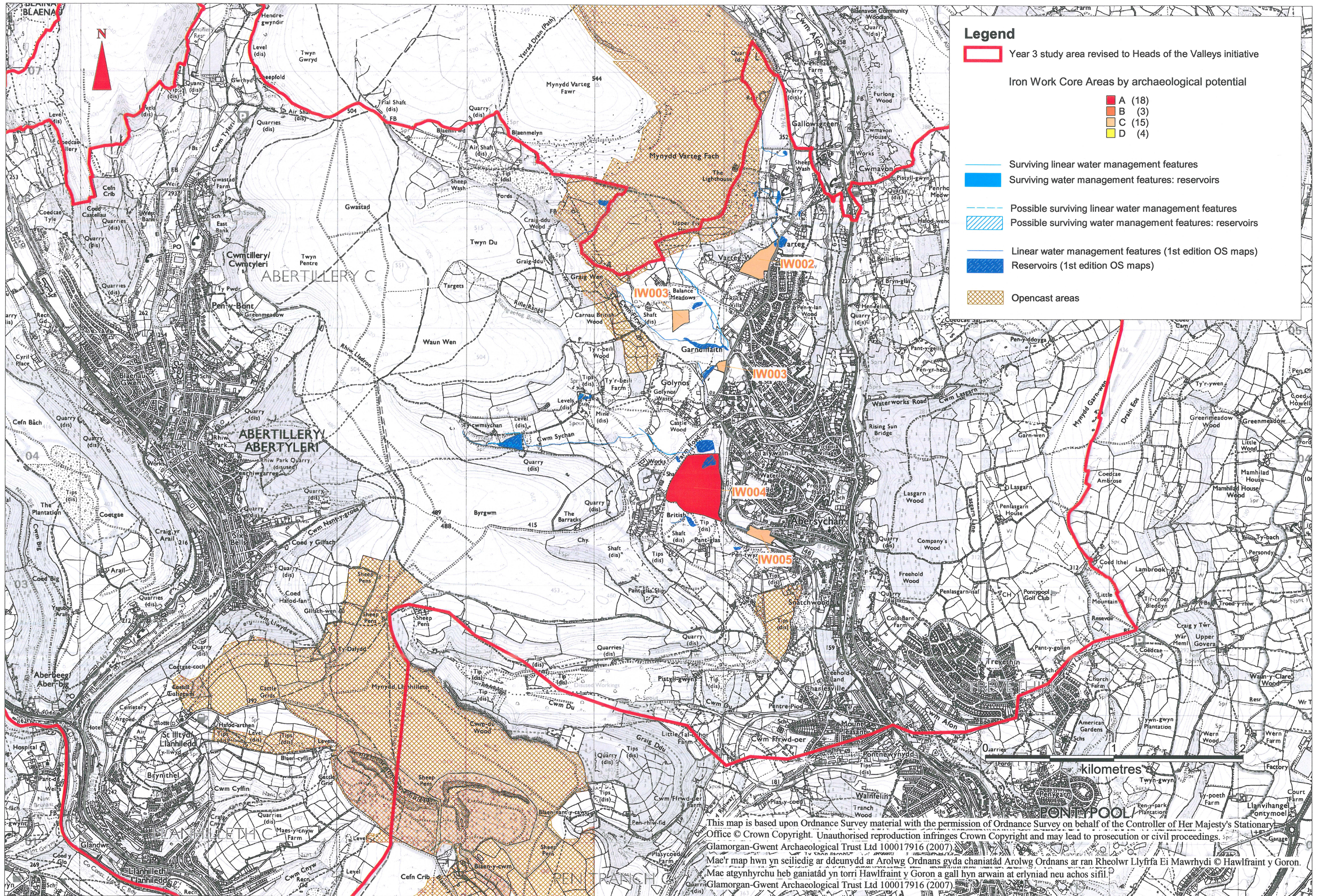
Glamorgan-Gwent Archaeological Trust Ltd 100017916 (2007).

Mae'r map hwn yn seiliedig ar ddeunydd ar Arolwg Ordnans gyda chaniatâd Arolwg Ordnans ar ran Rheolwr Llyfrfa Ei Mawrhydi © Hawlfraint y Goron.

Mae atgynhyrchu heb ganiatâd yn torri Hawlfraint y Goron a gall hyn arwain at erlyniad neu achos sifil.

Glamorgan-Gwent Archaeological Trust Ltd 100017916 (2007).

Figure 15. Water Management Features Surviving (detail of eastern area: IW002-IW005)



Legend

- Year 3 study area revised to Heads of the Valleys initiative
- Iron Work Core Areas by archaeological potential
 - A (18)
 - B (3)
 - C (15)
 - D (4)
- Surviving linear water management features
- Surviving water management features: reservoirs
- Possible surviving linear water management features
- Possible surviving water management features: reservoirs
- Linear water management features (1st edition OS maps)
- Reservoirs (1st edition OS maps)
- Opencast areas

This map is based upon Ordnance Survey material with the permission of Ordnance Survey on behalf of the Controller of Her Majesty's Stationary Office © Crown Copyright. Unauthorised reproduction infringes Crown Copyright and may lead to prosecution or civil proceedings. Glamorgan-Gwent Archaeological Trust Ltd 100017916 (2007).
 Mae'r map hwn yn seiliedig ar ddeunydd ar Arolwg Ordnans gyda chaniatâd Arolwg Ordnans ar ran Rheolwr Llyfrfa Ei Mawrhydi © Hawlfraint y Goron.
 Mae atgynhyrchu heb ganiatâd yn torri Hawlfraint y Goron a gall hyn arwain at erlyniad neu achos sifil.
 Glamorgan-Gwent Archaeological Trust Ltd 100017916 (2007).